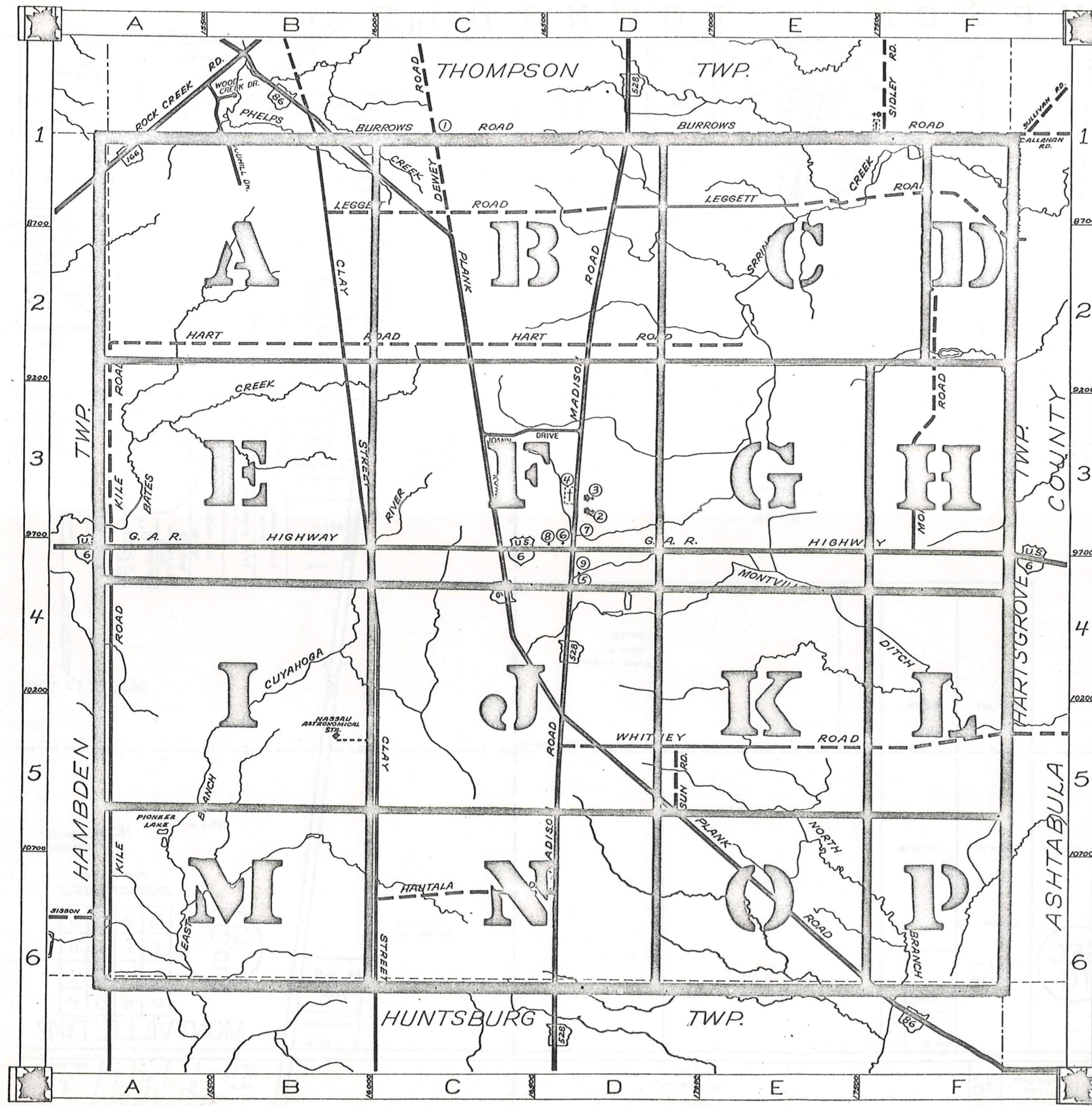


# ROAD INDEX



A	I	R	ROCK CREEK RD. A1
	J		JOANN DRIVE C-3
B	K	S	BURROWS RD. BI-F1 KILE ROAD A2-A6 SUN ROAD D5
	L	T	CLAY STREET BI-C6 LEGGETT RD. BI-F2
C	M	U	DEWEY ROAD CI MADISON RD. DI-D6 MORGAN RD. FI-F3 MURPHY RD. FI
	N	V	
D		W	WHITNEY RD. D5-F5 WOODHILL DR. BI
	O	X	
E		Y	
	P	Z	G.A.R. HIGHWAY A4-F4 PLANK ROAD BI-F6
F			HART ROAD A2-E2 HAUTALA ROAD C6

- ① LEDGEMONT SCHOOL
- ② COMMUNITY CHURCH
- ③ MONTVILLE METHODIST CHURCH
- ④ MONTVILLE CEMETERY
- ⑤ MONTVILLE VOL. FIRE DEPT.
- ⑥ UNITED STATES POST OFFICE
- ⑦ MONTVILLE TOWN HALL
- ⑧ STATE HIGHWAY GARAGE (SUB STATION)
- ⑨ MONTVILLE COMMUNITY CENTER

**MONTVILLE TOWNSHIP**

SCALE: 1" = 2000'

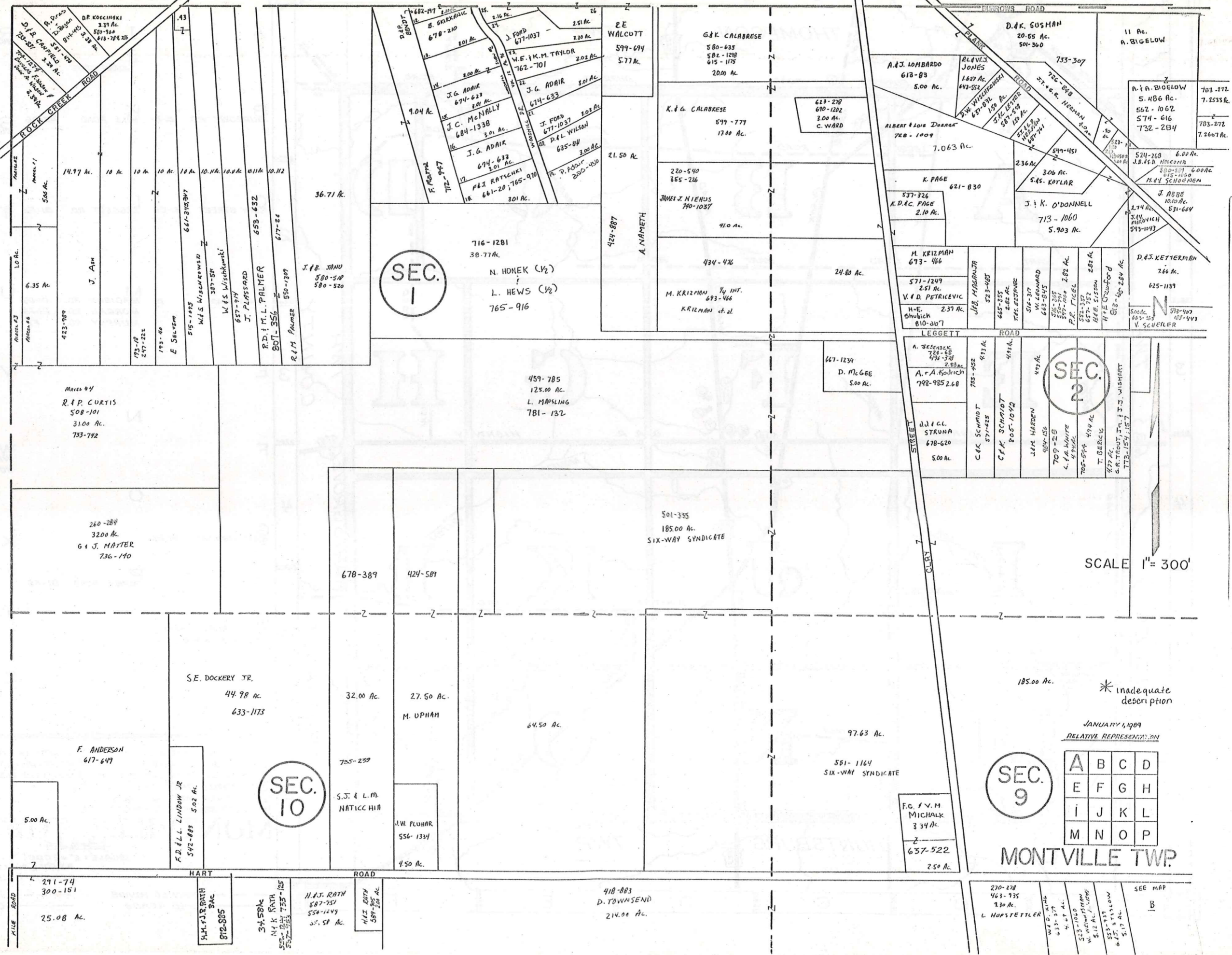
ROBERT L. PHILLIPS,  
GEAUGA COUNTY ENGINEER

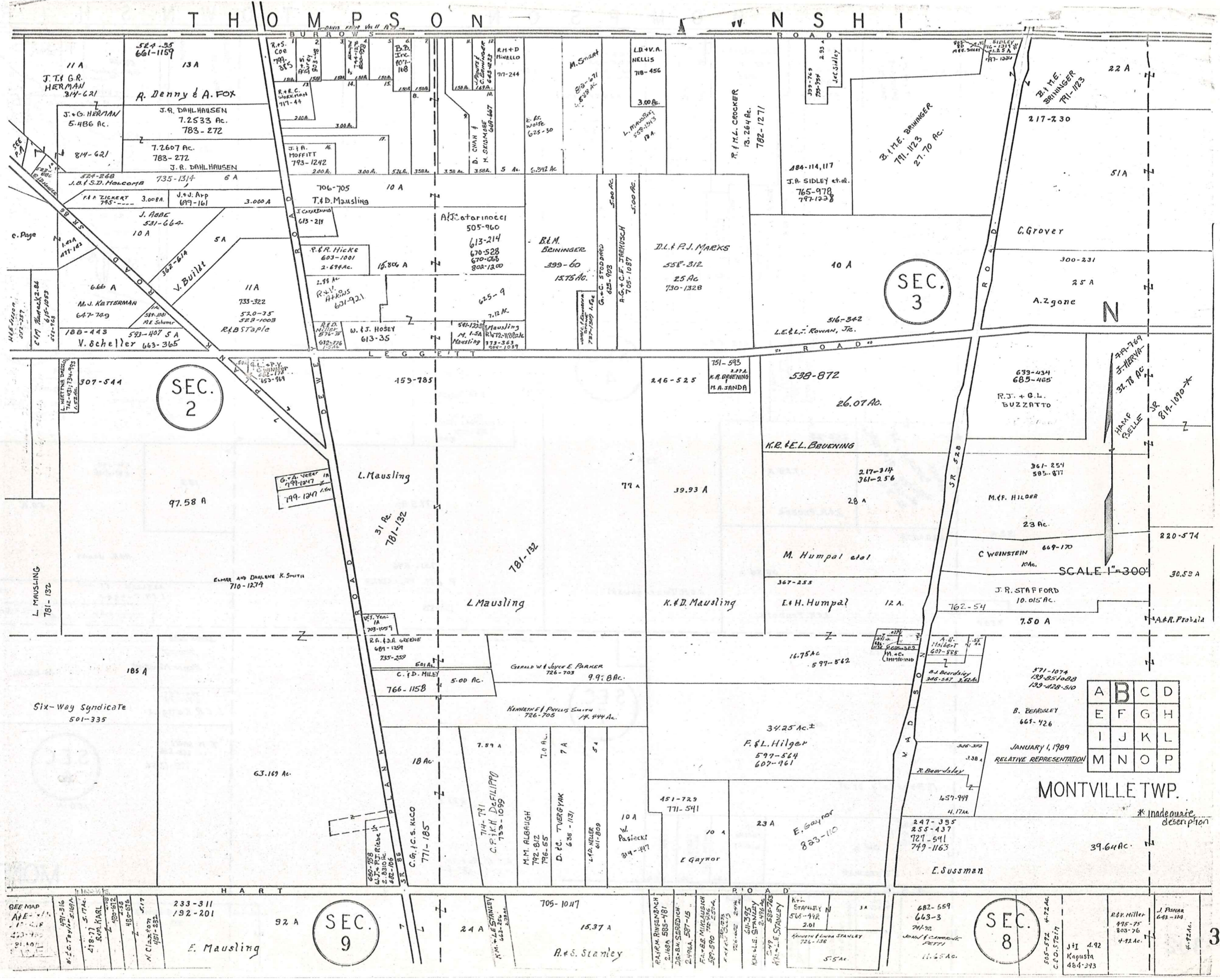
--- UNPAVED ROADS  
--- PAVED ROADS  
--- TOWNSHIP LINE  
--- COUNTY LINE



# T H O M P S O N T O W N S H I P

## H A M B D E N T O W N S H I P



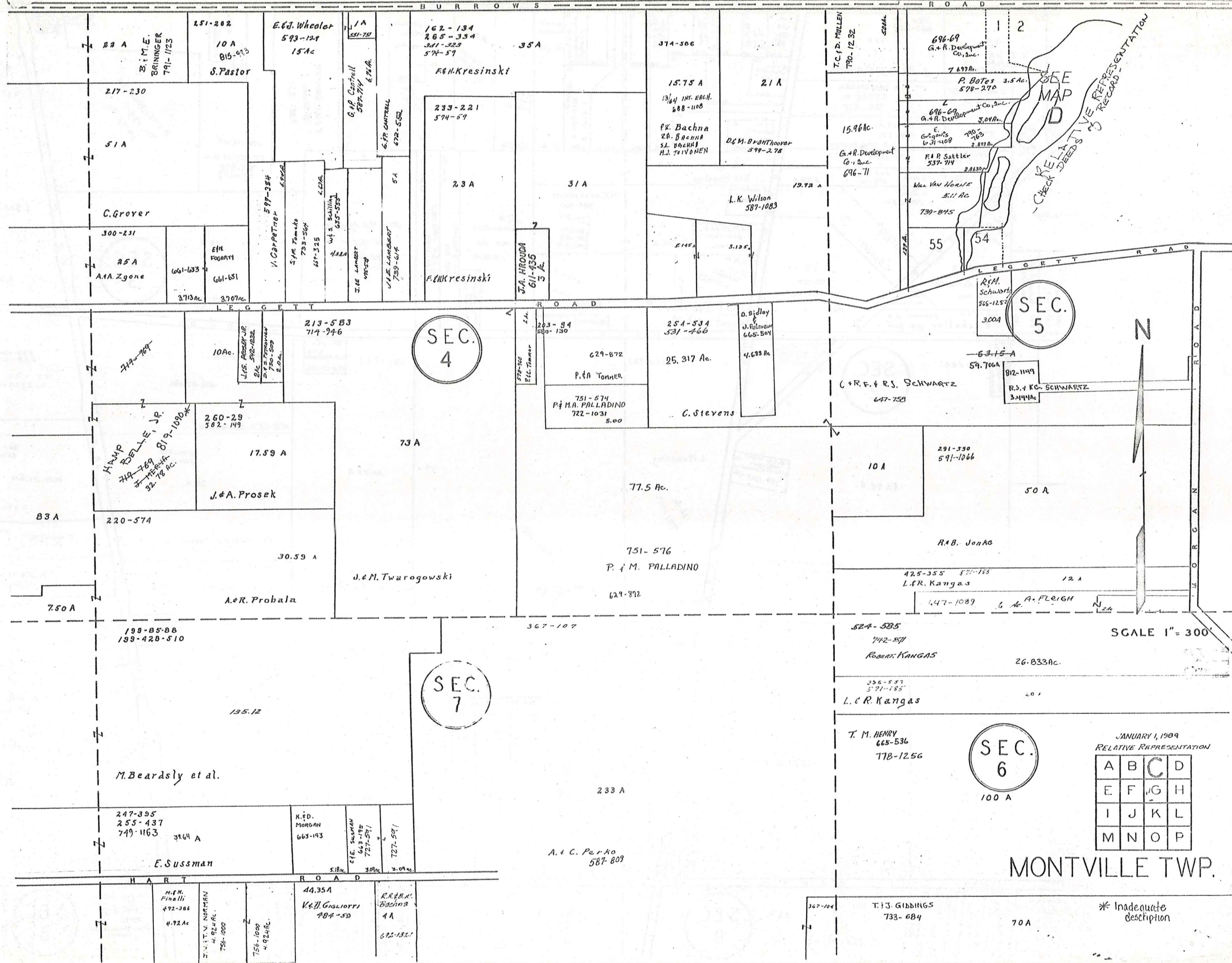


A	B	C	D
E	F	G	H
I	J	K	L
M	N	O	P

MONTVILLE TWP.

\* Inadequate description

T H O M P S O N T O W N S H I P



SEC. 4

SEC. 5

SEC. 7

SEC. 6

JANUARY 1, 1909  
RELATIVE REPRESENTATION

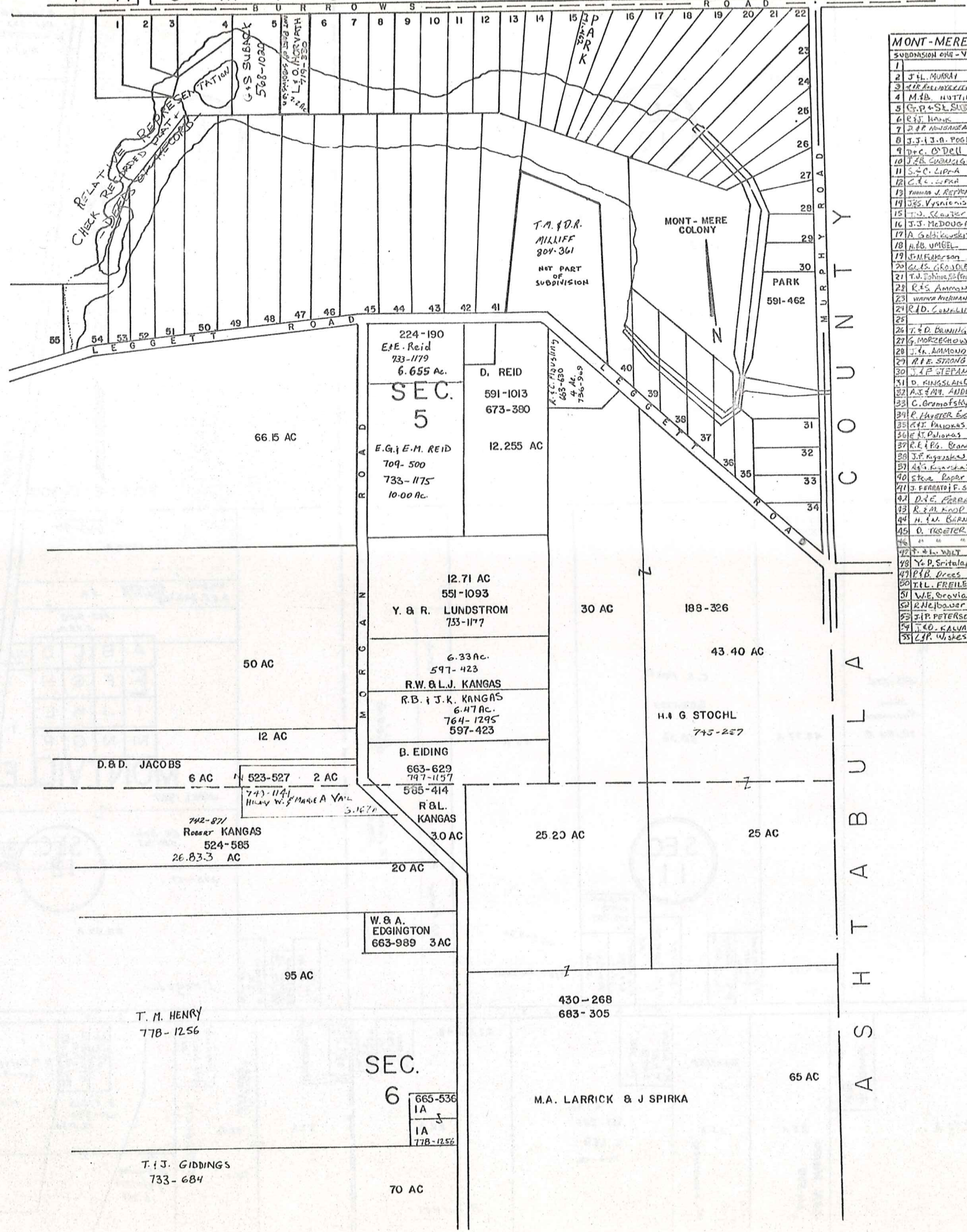
A	B	C	D
E	F	G	H
I	J	K	L
M	N	O	P

MONTVILLE TWP.

SCALE 1" = 300'

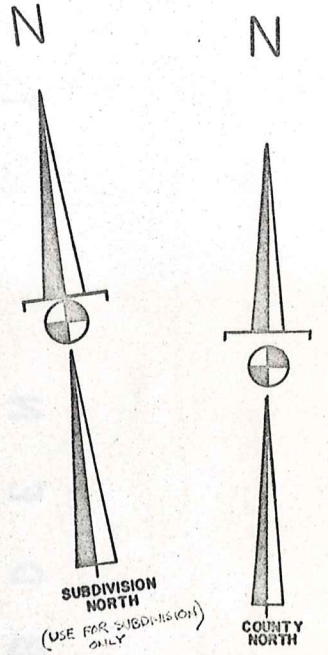
\* Inadequate description

T H I O M P S O N I O W N S H I P



**MONT-MERE COLONY**  
SUBDIVISION ONE - Vol. 7-Pg 94

1		
2	J.H. MURRAY	667-363
3	M.R. MURRAY	652-567
4	M.B. MURRAY	662-542
5	C.P. & S.L. SUTHER	539-1020
6	E.J. HANKE	700-175
7	D.P. MORGAN	762-150
8	J.J. & B. PUGHEN	763-633
9	J.C. O'DELL	747-1235
10	J.B. CUMMINGS	596-668
11	S.C. LIPPA	617-347
12	C.C. LIPPA	579-1041
13	Wm. J. REID	748-500
14	J.S. VERNON	633-560
15	J. McCALL	552-877
16	J. McDougall	701-1288
17	A. Galt	633-526
18	M.B. UMBER	581-659
19	J.M. HARRISON	621-482
20	G.S. GORDON	580-711
21	T.H. MURRAY (MURRAY)	733-1537
22	R.S. AMMOND	681-837
23	Wm. HARRISON	789-828
24	R.D. CUMMINGS	585-302
25		
26	T.D. BANNISTER	552-52
27	G. MORSE	633-1037
28	J. R. AMMOND	648-1058
29	M.F. STANGE	728-119
30	T.F. STANGE	676-217
31	D. KINGSLAND	576-611
32	R.S. & M. ANDREWS	583-714
33	C. GORMAN	612-112
34	P. HAYTER & Co	550-780
35	E.T. PALANIS	547-367
36	E.T. PALANIS	647-367
37	E.T. PALANIS	525-123
38	J.F. KINGSLEY	633-877
39	E.T. PALANIS	633-413
40	St. Raphael	735-1035
41	J. FERRARI & F. SIMON	707-210
42	D.E. GREGG	658-1007
43	R.M. HOP	735-872
44	H.M. BURMAN	593-120
45	D. TROTTER	407-327
46		
47	T. W. WILLY	708-122
48	Y.P. Sritalapat	610-223
49	P.B. Drees	571-227
50	T.L. FREILEY	771-236
51	W.E. GONIAK	611-301
52	R. H. BOWER	612-112
53	J.P. PETERSON	787-297
54	T.O. KAVATIS	532-828
55	J.P. WILKES	621-1042



SCALE: 1" = 300'  
JAN. 1, 1989  
RELATIVE REPRESENTATION

\* Inadequate description

A	B	C	D
E	F	G	H
I	J	K	L
M	N	O	P

H A M B D E N T O W N S H I P

291-74  
300-151

25.08 A

W. Pastula

592-985  
E.L. J. White 419-928  
5.008 Ac.  
768-936  
R.G. Minalic  
592-884  
5.008 734-384  
John & Mary Leake  
732-1085  
5.008 Ac.

E. Ries  
30-12-80  
312-444

M.A.K. Roth

H. & J. Roth  
587-951  
37.58 Ac.  
34.58 Ac.

451-940

SEC. 10

214 A

SEC. 9

270-478  
463-935  
L. HOFSTETLER  
9.3 Ac

35.25 A

R. B. Townsend

130-  
Mrs. Stone

37.75 A

W. C. Frank  
486-919

452-1016

25 A

25.16 A

C. Homeier

R. B. Townsend  
777-1017

100 A

SCALE 1"=300'

532-408  
N.M.  
MELARASNO  
25A

21.71 A

J. J. NINGARD JR.  
611-1276

285-577  
578-323

H. Townsend  
663-90  
11.02 A

SEC. 10 540-377  
715-1034  
Kern R. & Kathleen J. Lyons  
4.40 A  
409-8  
M. Tripodo  
4.40 A  
287-115  
S. Tripodo  
4.39 A

790-338  
B.78 A  
W.E., Jr. & R.A. HART

336-338  
B.75 A  
F. Metzger (as Miller)

278-186  
715-288  
A.M. Iannica  
8.75 A

8.744 A  
571-482  
709-1258  
Vaso Kozlovich, Jr.

J. & M. Kertis  
8.73 A  
593-1045

699-285  
M. & C. Knowlton  
8.72 A  
734-141

6.34 A

J. Melton  
878-437  
E.G. DRYER  
285-1234  
C. Brock  
218 Ac.  
158 Ac.  
700-1171  
261 Ac.  
C. BYRNE  
609-676  
Randy & Susan  
Clemens  
3369 Ac.  
597-1181  
E.C. SACMS  
785-391  
K.R. Melton  
473 Thompson  
578-221  
A.J. Knapik  
803-632

515-736  
John  
Hullinger  
38.184 A.

43.77 A

SEC. 11

C.S. Heath

603-1035

68.56

46 A

T. D. Pierce  
705-24

G.F. Davis  
509-123

263-11  
A. E. Schley  
5 A

583-948  
5.73 Ac.

A B C D  
E F G H  
I J K L  
M N O P

C. J. Misosky  
788-990

105 A

JAN. 1, 1989  
RELATIVE REPRESENTATION

MONTVILLE TWP.  
JAN. 1, 1987

G.F. Davis  
587-923

SEC. 12

218-117

28.07 A

E. Hegebus

\* Inadequate  
description

254-115  
392 A  
R.A.L. Craxton

316-348

605-1111  
D.V. Popp  
39.42 A

R. & C. Bernardelli

50-521  
E.B. BAKER  
306

220-614

72.70 A

A. & J. Miller

R.L. Bednar  
3 Ac  
794-657

25 A

J.E.N. WINTERS  
611-550

706-1124

25 A

E. LEWANSKI

R.T. SLEZAK  
T. HARR  
300 Ac  
794-556

49 Ac.  
751-265

L. LEE  
746-46

224-248

52 A

R. Turner

W.P. Habert  
611-563  
380-284  
M.L. Krieger

577-403  
577-403  
577-403  
577-403

27 A

424-502  
582-692

23 Ac

E. Di Donato

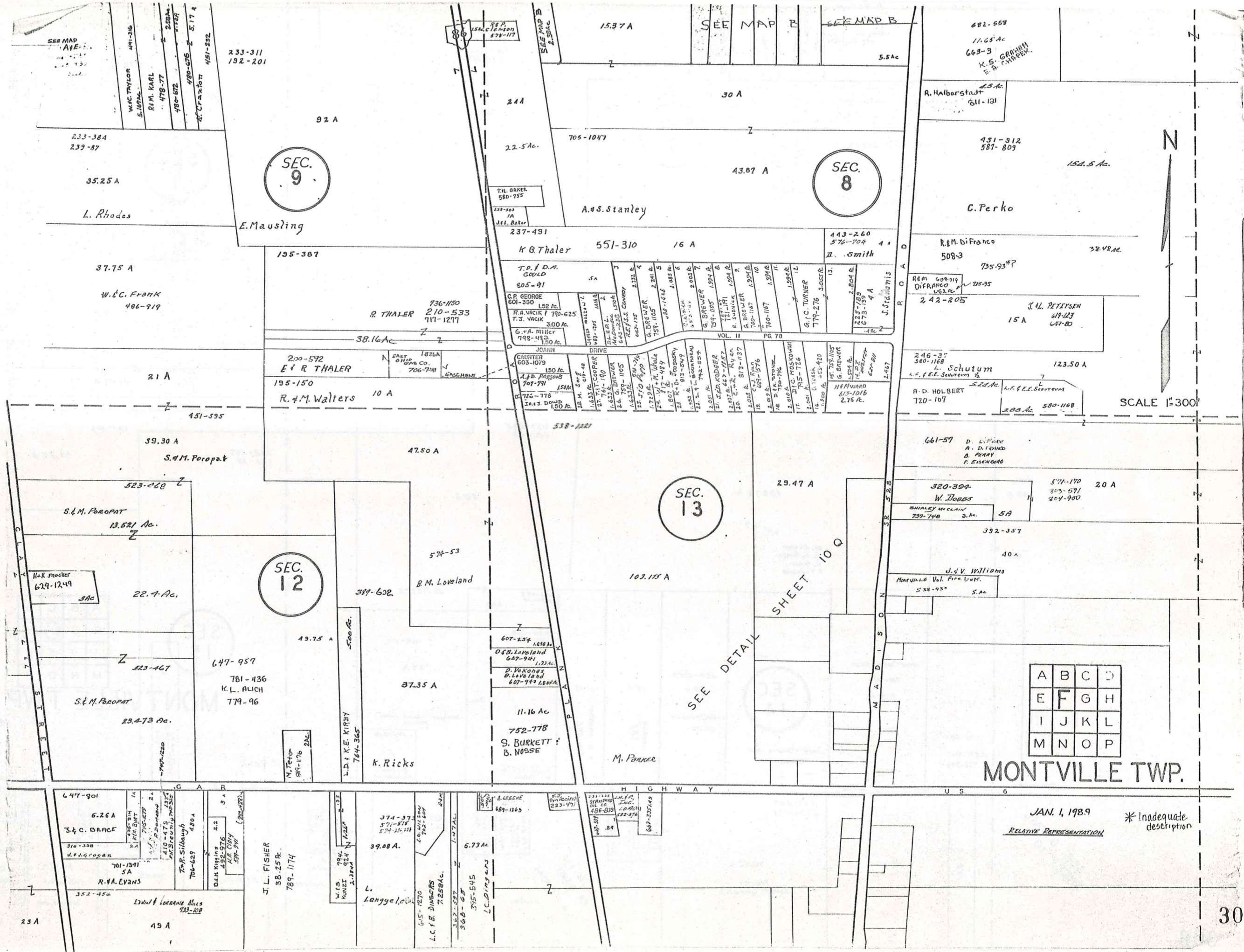
8. Eyring  
629-390  
12.51 Ac.

27 A

G. Eyring  
591-1200  
12.714

H.M. Boesger Jr.  
601-712

6.26 A



SEC. 9

SEC. 8

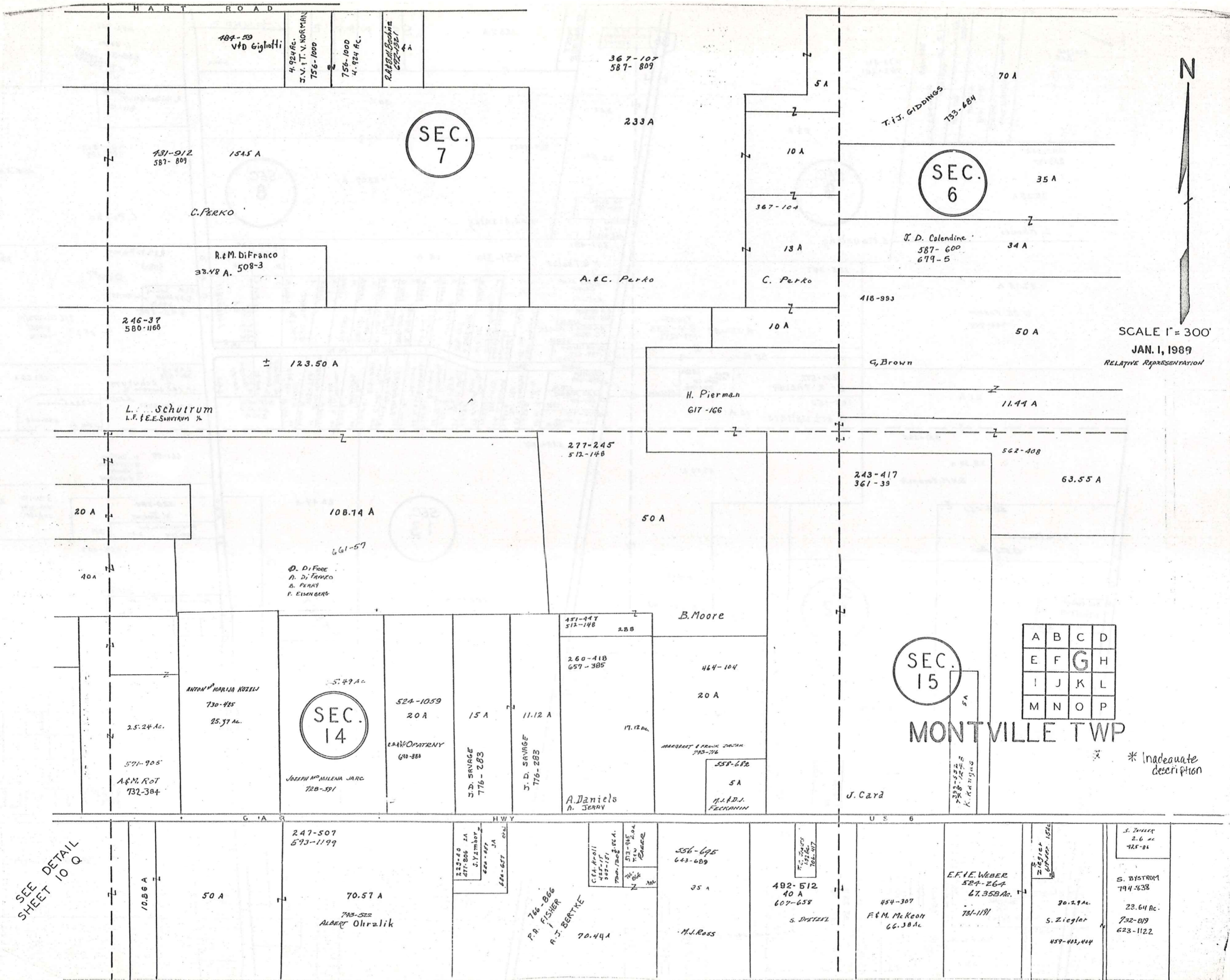
SEC. 13

SEC. 12

A	B	C	D
E	F	G	H
I	J	K	L
M	N	O	P

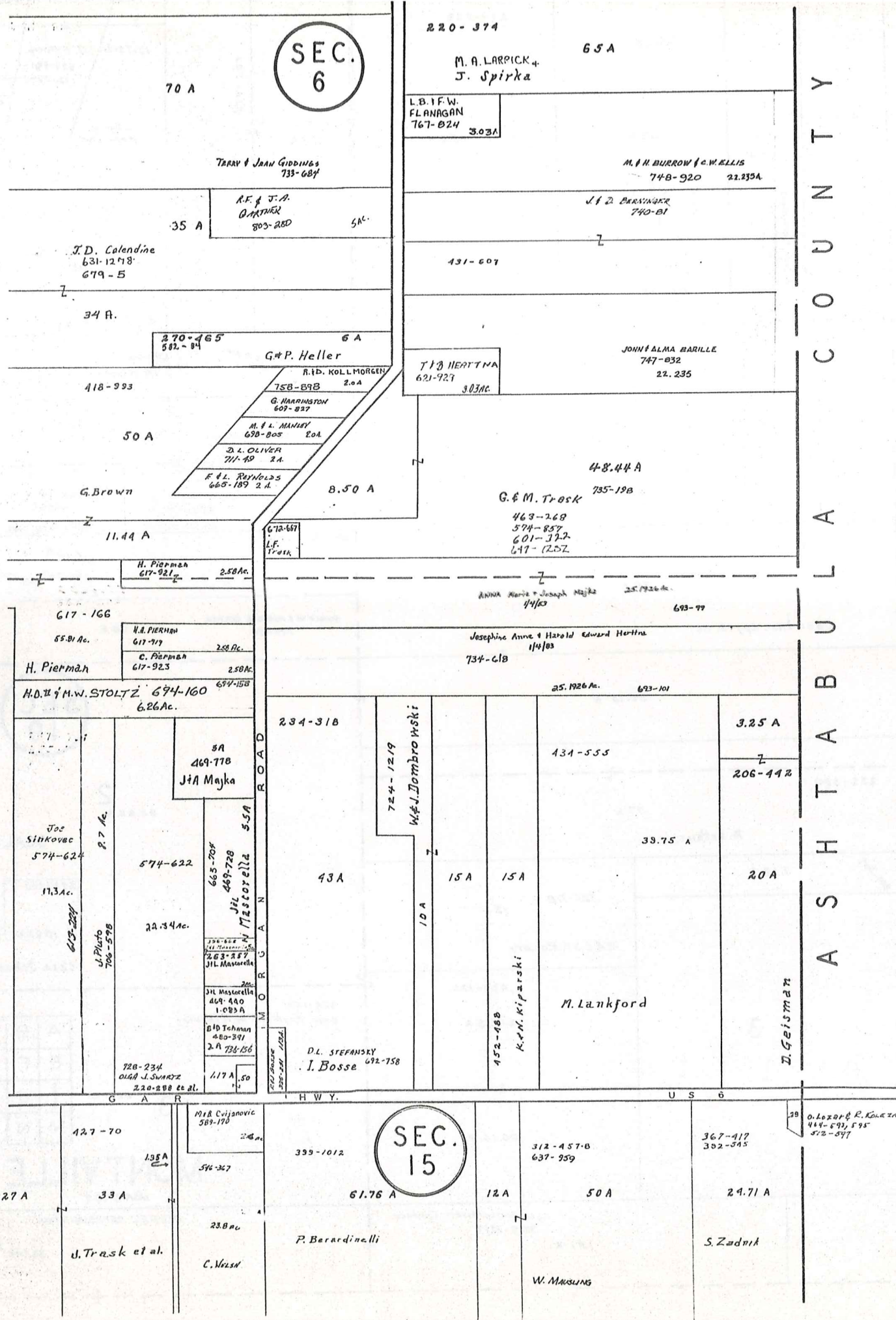
MONTVILLE TWP.

JAN. 1, 1989  
 \* Inadequate description



SEE DETAIL SHEET 10 Q





SEC. 6

SEC. 15

A S H T A B U L A C O U N T Y



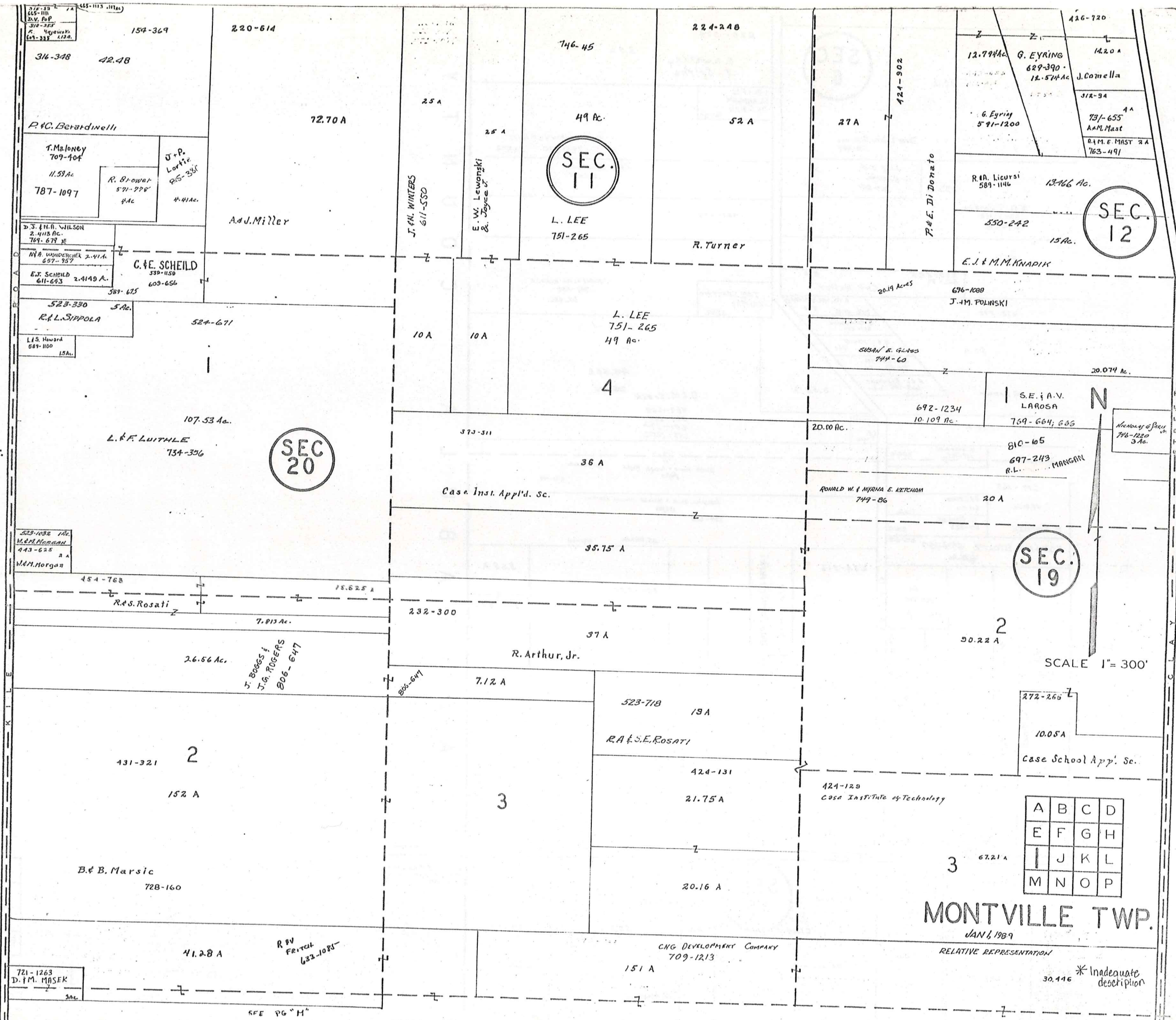
SCALE 1" = 300'

\* Inadequate description  
 JANUARY 1, 1989  
 RELATIVE REPRESENTATION

A	B	C	D
E	F	G	H
I	J	K	L
M	N	O	P

MONTVILLE TWP 307

H A M B D E N T O W N S H I P



MONTVILLE TWP.

JAN 6, 1989  
RELATIVE REPRESENTATION

A	B	C	D
E	F	G	H
I	J	K	L
M	N	O	P

\* Inadequate description

SEC. 12

SEC. 13

SEC. 18

39A-1174  
J.M. Arnold  
424-685

29 A  
E. Mills

J.L. FISHER  
38.25 Ac.  
789-1174

374-373  
371-811  
374-231, 238

39.08 Ac.  
L.P. Lengyel  
724-1263

M.J. Mihalacki  
469-93  
22.422 A  
734-1346

R.W. & M. USIAK  
718-548  
1.540 Ac.

J.J. & J.M. Mihalacki  
718-482  
Joseph & Mary Lou  
Mihalacki  
574-1275  
2.2 Ac.  
M.C. Wexler  
523-878

DETAIL SHEET  
10 Q  
621-111 28.26 Ac.

635-825  
10.14 Ac. J & B WALTER

670-1080  
C.H. Loggans  
555-628

679-842  
42.322 Ac.  
R.L. WILSON

17.298 Ac.  
667-932, 933, 934  
M. Wilson

232-585  
Lillian N. Loggans  
739-237  
5.16 Ac.

Robert L. Wilson  
739-237  
0.54 Ac.

232-600

E.K. MO Pace  
530-820 2.37 Ac.  
E.K. MO Pace  
530-820

R. & S. Tomolin  
538-1390

E.S.K. Zielinski  
4.37 Ac.  
679-380  
671-392

M. & J.H.  
CLAUSE  
682-867

232-585  
Lillian N. Loggans  
739-237  
5.16 Ac.

Robert L. Wilson  
739-237  
0.54 Ac.

387-380  
1 Ac.  
H.C. Hoffman

496-330  
1.9 A

509-101  
H.C. Hoffman

SCALE 1" = 300'

117.75 A  
6

J.J. Pope  
701-1055  
4.765 Ac.

J.G. & H. CWIK  
637-1205  
4.4344

N.K. Phillips  
597-131  
597-265  
4.109 Ac.

P.H. Borell  
589-425  
3.14 Ac.

D.H. CASTELLANO  
2.214 Ac. 780-311

J.C. & R.J. KAY  
750-689

R.P. YUNAS  
5.70 Ac.

255-70

509-101  
H.C. Hoffman

JANUARY 1, 1889

A	B	C	D
E	F	G	H
I	J	K	L
M	N	O	P

MONTVILLE TWP.

RELATIVE REPRESENTATION  
# INADEQUATE DESCRIPTION

295-478

SEC. 19

117.85 A  
5

J.J. Pope  
701-1055  
4.765 Ac.

J.G. & H. CWIK  
637-1205  
4.4344

N.K. Phillips  
597-131  
597-265  
4.109 Ac.

P.H. Borell  
589-425  
3.14 Ac.

D.H. CASTELLANO  
2.214 Ac. 780-311

J.C. & R.J. KAY  
750-689

R.P. YUNAS  
5.70 Ac.

766-177

68 A  
R. SUHAY  
M. HLEGRAK  
B. SUHAY, JR.  
A.S. RING

811-1205  
578-837  
J. Russin  
10.51 Ac.

J.C. RUSKIAN  
618-452  
3.09 Ac.

J.G. RUSKIAN  
618-452  
3.09 Ac.

J.C. & R.J. KAY  
750-689

R.P. YUNAS  
5.70 Ac.

J.G. RUSKIAN  
618-452  
3.09 Ac.

J.C. & R.J. KAY  
750-689

R.P. YUNAS  
5.70 Ac.

766-177

68 A  
R. SUHAY  
M. HLEGRAK  
B. SUHAY, JR.  
A.S. RING

M. & R.J. ZWOLENIK  
555-777

E.J. Hamen  
410-810  
10 A

653-706

36.3 A  
F. & J. KNSTIGAR -- 678-964  
J & V Omaha

10 A.

679-1163  
J.L. SIKLOSI  
RIP BAYER  
611-403  
1.50 Ac. 11-137

J.G. RUSKIAN  
618-452  
3.09 Ac.

J.C. & R.J. KAY  
750-689

766-177

44

68 A  
R. SUHAY  
M. HLEGRAK  
B. SUHAY, JR.  
A.S. RING

SEC. 18

64 A

212-374  
663-780  
671-727

38.3 A  
F. & J. KNSTIGAR -- 678-964  
J & V Omaha

38.3 A

38 A  
2

679-1163  
J.L. SIKLOSI  
RIP BAYER  
611-403  
1.50 Ac. 11-137

J.G. RUSKIAN  
618-452  
3.09 Ac.

J.C. & R.J. KAY  
750-689

R.P. YUNAS  
5.70 Ac.

766-177

44

68 A  
R. SUHAY  
M. HLEGRAK  
B. SUHAY, JR.  
A.S. RING

R. & J. HEI sr.  
193-435  
714-1169  
718-391

25 A

25 A

25 A

679-1163  
J.L. SIKLOSI  
RIP BAYER  
611-403  
1.50 Ac. 11-137

J.G. RUSKIAN  
618-452  
3.09 Ac.

J.C. & R.J. KAY  
750-689

R.P. YUNAS  
5.70 Ac.

766-177

44

68 A  
R. SUHAY  
M. HLEGRAK  
B. SUHAY, JR.  
A.S. RING

E. DILLWORTH

25 A

25 A

25 A

679-1163  
J.L. SIKLOSI  
RIP BAYER  
611-403  
1.50 Ac. 11-137

J.G. RUSKIAN  
618-452  
3.09 Ac.

J.C. & R.J. KAY  
750-689

R.P. YUNAS  
5.70 Ac.

766-177

44

68 A  
R. SUHAY  
M. HLEGRAK  
B. SUHAY, JR.  
A.S. RING

D. J. Hale

F. STAPIC  
593-312  
30.699 Ac.

593-314  
663-841  
30.699 Ac.

J & A. Stepic  
4

710-592

ALBERT Rabatin  
36 Ac.

J. & M. Rabatin  
701-735  
10 Ac.

619-307 24  
612-285  
J.M. Rabatin  
296-566  
712-331  
440-222 24  
619-260  
442 Rabatin

731-657  
M. & E. Rogers

39.22 A  
3

39.22 A

39.22 A

679-1163  
J.L. SIKLOSI  
RIP BAYER  
611-403  
1.50 Ac. 11-137

J.G. RUSKIAN  
618-452  
3.09 Ac.

J.C. & R.J. KAY  
750-689

R.P. YUNAS  
5.70 Ac.

766-177

44

68 A  
R. SUHAY  
M. HLEGRAK  
B. SUHAY, JR.  
A.S. RING

WHITNEY ROAD

SR 528

SR 56

SR 56

M. Leber  
m. Heil  
815-513  
4.93 Ac.

R.L. S.A.  
CRAWFORD  
755-938  
20.010 Ac.

453-333  
20.76 A

G.A.C. Brown

W.D. MARTIN  
777-462  
3.00 Ac.

W.E.J. BOURMONT  
637-200  
1.00 Ac.

721-855  
R.N. & C.L. SCHULTZ  
3 Ac.

380-473  
D. L. BURACK  
734-322  
3.0 Ac.

2.70 A

W.D. MARTIN  
777-462  
3.00 Ac.

W.E.J. BOURMONT  
637-200  
1.00 Ac.

721-855  
R.N. & C.L. SCHULTZ  
3 Ac.

380-473  
D. L. BURACK  
734-322  
3.0 Ac.

2.70 A

W.D. MARTIN  
777-462  
3.00 Ac.

W.E.J. BOURMONT  
637-200  
1.00 Ac.

721-855  
R.N. & C.L. SCHULTZ  
3 Ac.

380-473  
D. L. BURACK  
734-322  
3.0 Ac.

2.70 A

W.D. MARTIN  
777-462  
3.00 Ac.

W.E.J. BOURMONT  
637-200  
1.00 Ac.

721-855  
R.N. & C.L. SCHULTZ  
3 Ac.

380-473  
D. L. BURACK  
734-322  
3.0 Ac.

2.70 A

W.D. MARTIN  
777-462  
3.00 Ac.

W.E.J. BOURMONT  
637-200  
1.00 Ac.

721-855  
R.N. & C.L. SCHULTZ  
3 Ac.

380-473  
D. L. BURACK  
734-322  
3.0 Ac.

2.70 A

W.D. MARTIN  
777-462  
3.00 Ac.

W.E.J. BOURMONT  
637-200  
1.00 Ac.

721-855  
R.N. & C.L. SCHULTZ  
3 Ac.

380-473  
D. L. BURACK  
734-322  
3.0 Ac.

2.70 A

W.D. MARTIN  
777-462  
3.00 Ac.

W.E.J. BOURMONT  
637-200  
1.00 Ac.

721-855  
R.N. & C.L. SCHULTZ  
3 Ac.

380-473  
D. L. BURACK  
734-322  
3.0 Ac.

2.70 A

W.D. MARTIN  
777-462  
3.00 Ac.

W.E.J. BOURMONT  
637-200  
1.00 Ac.

721-855  
R.N. & C.L. SCHULTZ  
3 Ac.

380-473  
D. L. BURACK  
734-322  
3.0 Ac.

2.70 A

W.D. MARTIN  
777-462  
3.00 Ac.

W.E.J. BOURMONT  
637-200  
1.00 Ac.

721-855  
R.N. & C.L. SCHULTZ  
3 Ac.

380-473  
D. L. BURACK  
734-322  
3.0 Ac.

2.70 A

W.D. MARTIN  
777-462  
3.00 Ac.

W.E.J. BOURMONT  
637-200  
1.00 Ac.

721-855  
R.N. & C.L. SCHULTZ  
3 Ac.

380-473  
D. L. BURACK  
734-322  
3.0 Ac.

2.70 A

W.D. MARTIN  
777-462  
3.00 Ac.

W.E.J. BOURMONT  
637-200  
1.00 Ac.

721-855  
R.N. & C.L. SCHULTZ  
3 Ac.

380-473  
D. L. BURACK  
734-322  
3.0 Ac.

2.70 A

W.D. MARTIN  
777-462  
3.00 Ac.

W.E.J. BOURMONT  
637-200  
1.00 Ac.

721-855  
R.N. & C.L. SCHULTZ  
3 Ac.

380-473  
D. L. BURACK  
734-322  
3.0 Ac.

2.70 A

W.D. MARTIN  
777-462  
3.00 Ac.

W.E.J. BOURMONT  
637-200  
1.00 Ac.

721-855  
R.N. & C.L. SCHULTZ  
3 Ac.

380-473  
D. L. BURACK  
734-322  
3.0 Ac.

2.70 A

W.D. MARTIN  
777-462  
3.00 Ac.

W.E.J. BOURMONT  
637-200  
1.00 Ac.

721-855  
R.N. & C.L. SCHULTZ  
3 Ac.

380-473  
D. L. BURACK  
734-322  
3.0 Ac.

2.70 A

W.D. MARTIN  
777-462  
3.00 Ac.

W.E.J. BOURMONT  
637-200  
1.00 Ac.

721-855  
R.N. & C.L. SCHULTZ  
3 Ac.

380-473  
D. L. BURACK  
734-322  
3.0 Ac.

2.70 A

W.D. MARTIN  
777-462  
3.00 Ac.

W.E.J. BOURMONT  
637-200  
1.00 Ac.

721-855  
R.N. & C.L. SCHULTZ  
3 Ac.

380-473  
D. L. BURACK  
734-322  
3.0 Ac.

2.70 A

W.D. MARTIN  
777-462  
3.00 Ac.

W.E.J. BOURMONT  
637-200  
1.00 Ac.

721-855  
R.N. & C.L. SCHULTZ  
3 Ac.

380-473  
D. L. BURACK  
734-322  
3.0 Ac.

2.70 A

W.D. MARTIN  
777-462  
3.00 Ac.

W.E.J. BOURMONT  
637-200  
1.00 Ac.

721-855  
R.N. & C.L. SCHULTZ  
3 Ac.

380-473  
D. L. BURACK  
734-322  
3.0 Ac.

2.70 A

W.D. MARTIN  
777-462  
3.00 Ac.

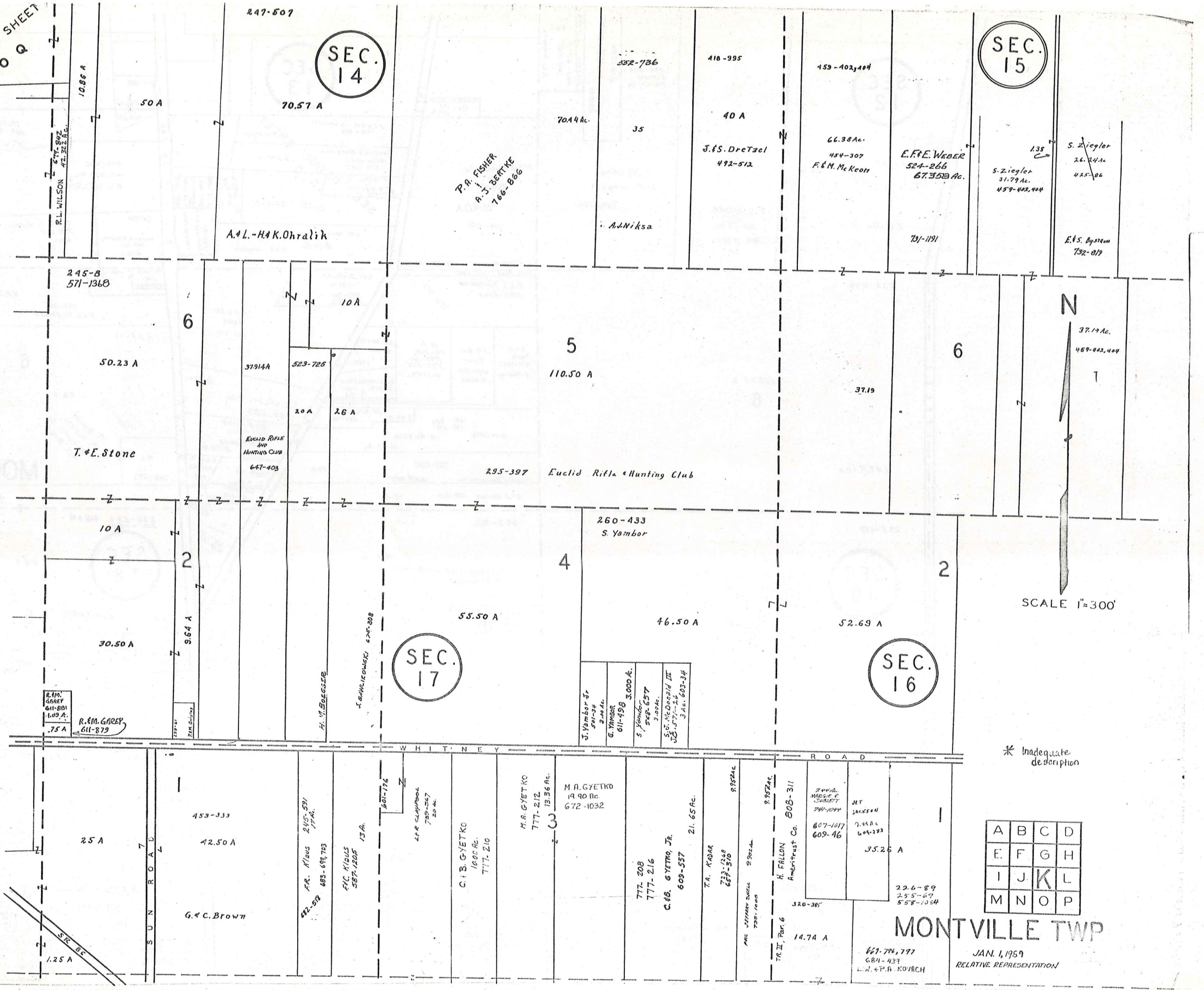
SEE  
DETAIL SHEET  
10 Q

SEC.  
14

SEC.  
15

SEC.  
17

SEC.  
16



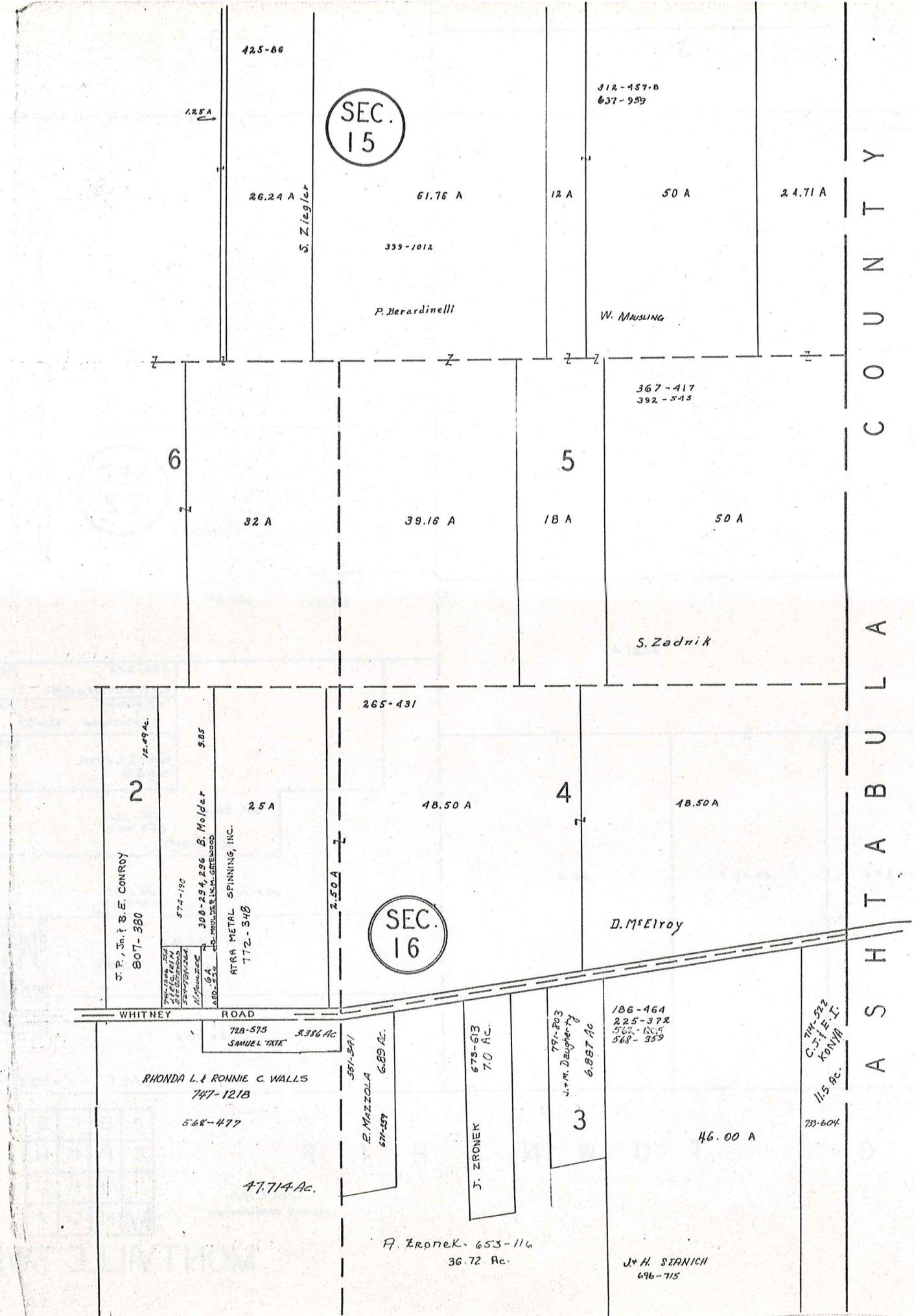
SCALE 1"=300'

\* Inadequate description

A	B	C	D
E	F	G	H
I	J	K	L
M	N	O	P

MONTVILLE TWP

JAN. 1, 1959  
RELATIVE REPRESENTATION



COUNTY  
ASHTABULA



\* Inadequate description

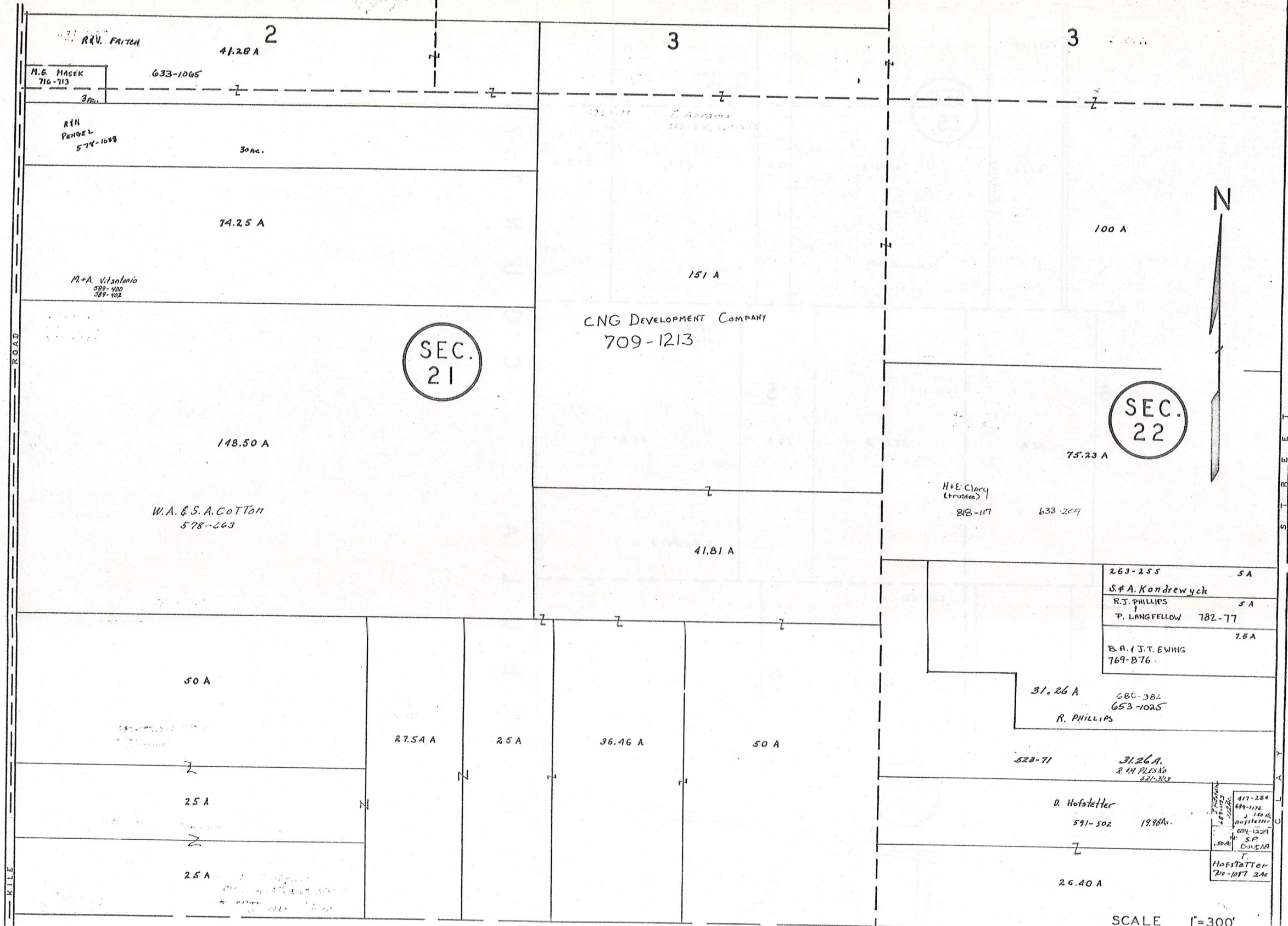
SCALE 1"=300'

JAN. 1, 1989

A	B	C	D
E	F	G	H
I	J	K	L
M	N	O	P

RELATIVE REPRESENTATION

H A M B D E N T O W N S H I P



SEC. 21

SEC. 22



SCALE 1"=300'

H U N T S B U R G T O W N S H I P

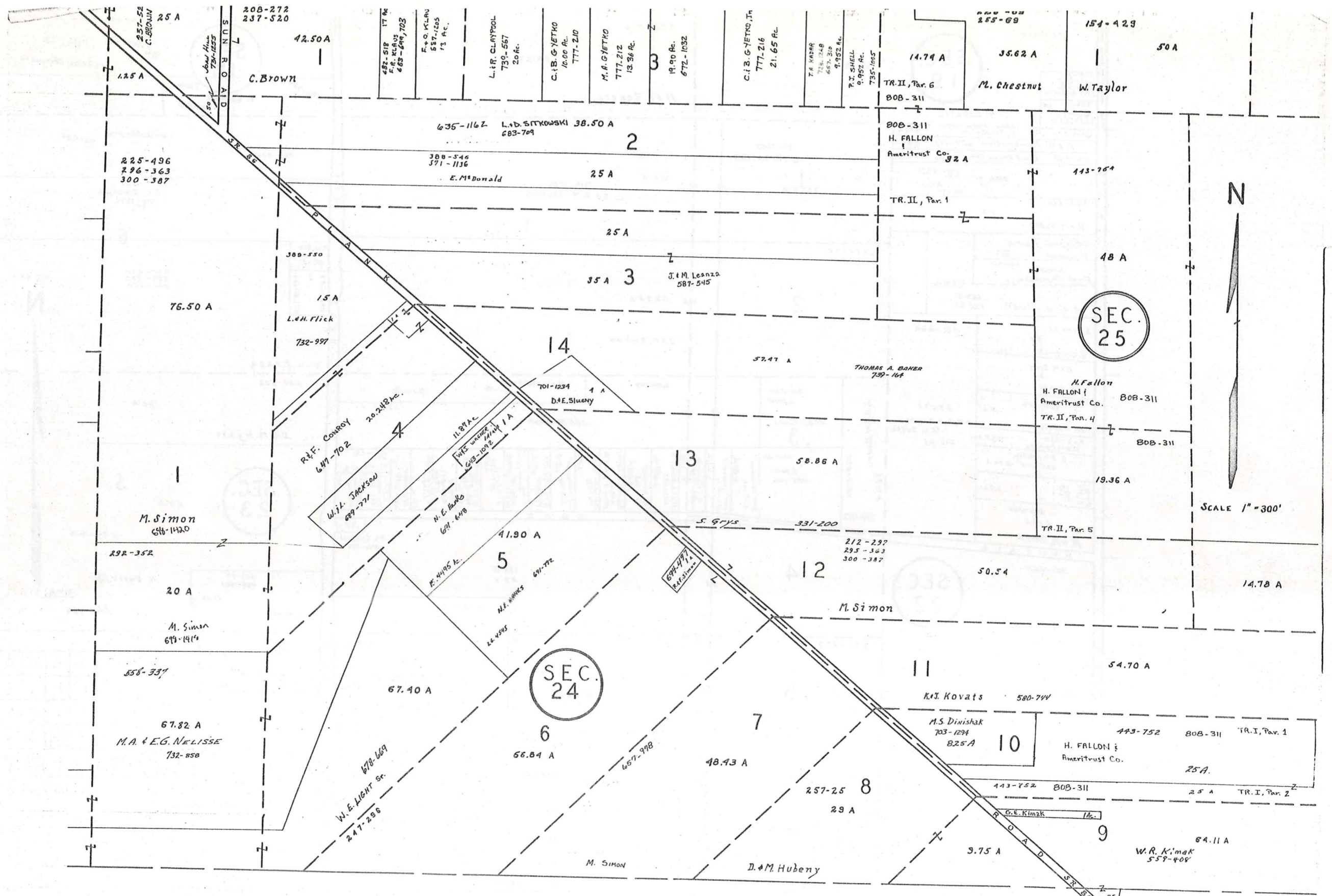
A	B	C	D
E	F	G	H
I	J	K	L
M	N	O	P

JAN. 1, 1989  
RELATIVE REPRESENTATION

MONTVILLE TWP

\* Inadequate description





H U N T S B U R G T O W N S H I P

JAN 1, 1989  
SCALE 1" = 300'

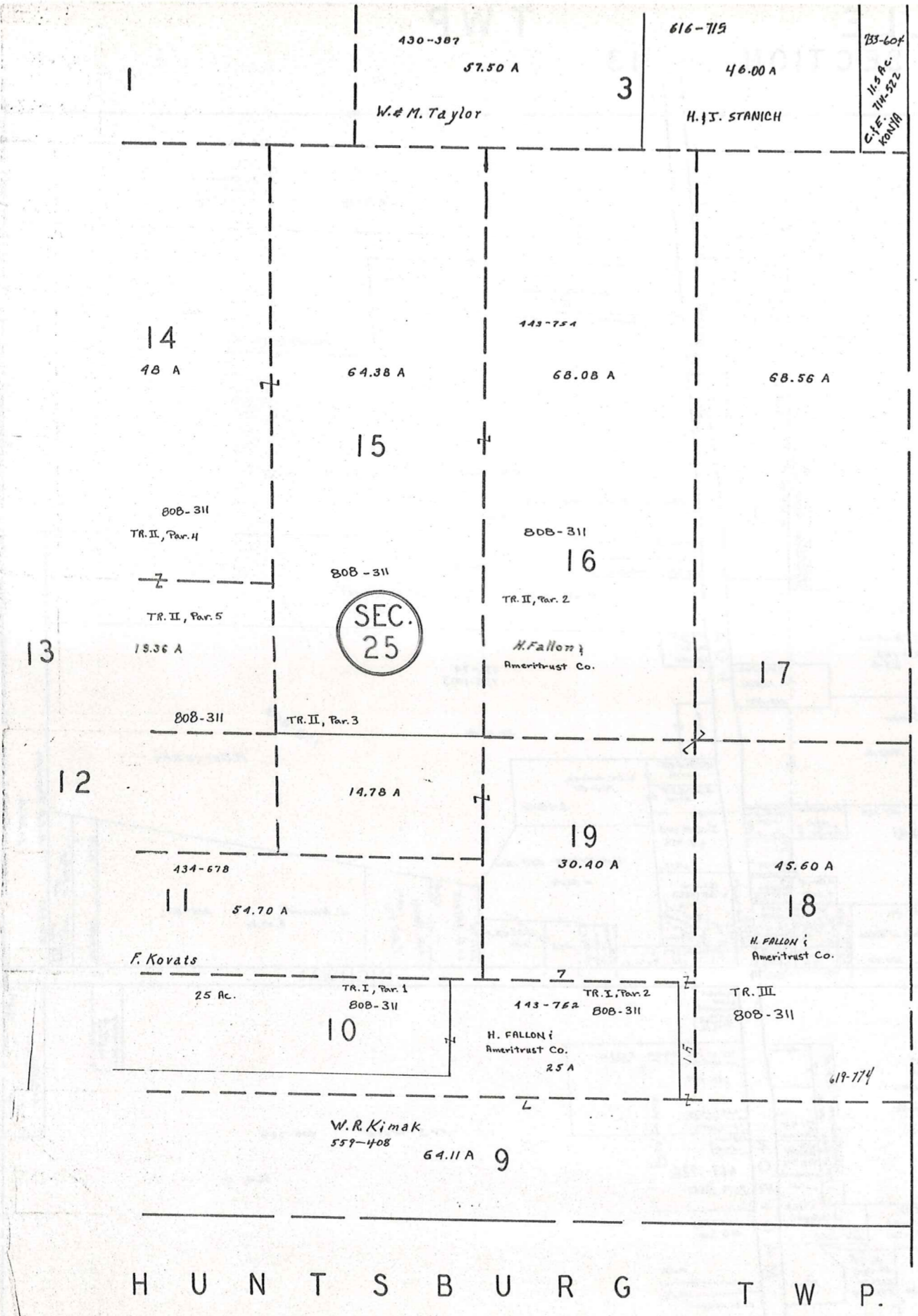
A	B	C	D
E	F	G	H
I	J	K	L
M	N	O	P

\* inadequate description

RELATIVE REPRESENTATION

MONTVILLE TWP.





A S H T A B U L A C O U N T Y

H U N T S B U R G T W P.



SCALE 1" = 300'

JAN 1, 1989

RELATIVE REPRESENTATION

\* Inadequate description

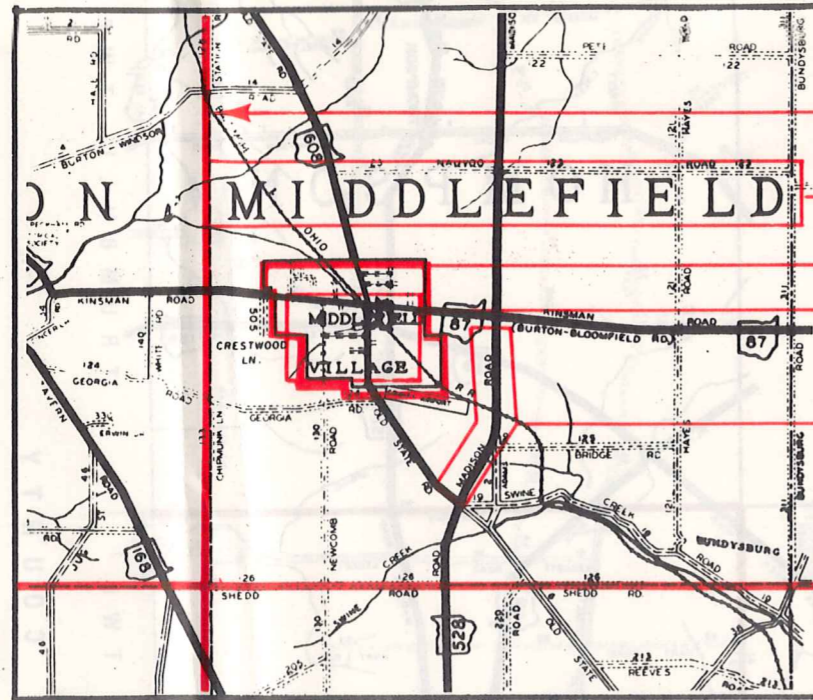
A	B	C	D
E	F	G	H
I	J	K	L
M	N	O	P

MONTVILLE TWP



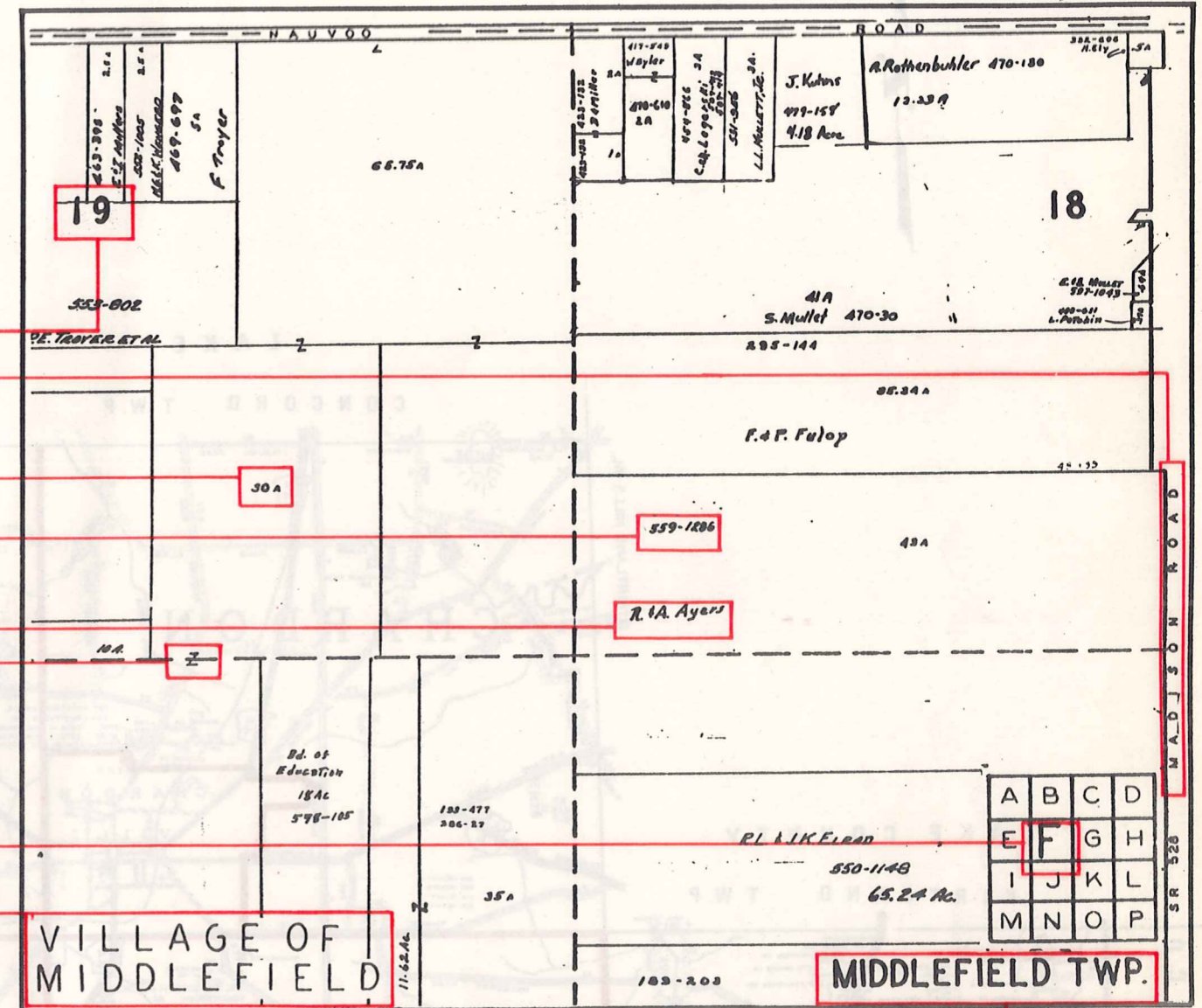
# Explanation and Use Sheet for Geauga County, Ohio

SAMPLE (PARTIAL) COUNTY INDEX MAP



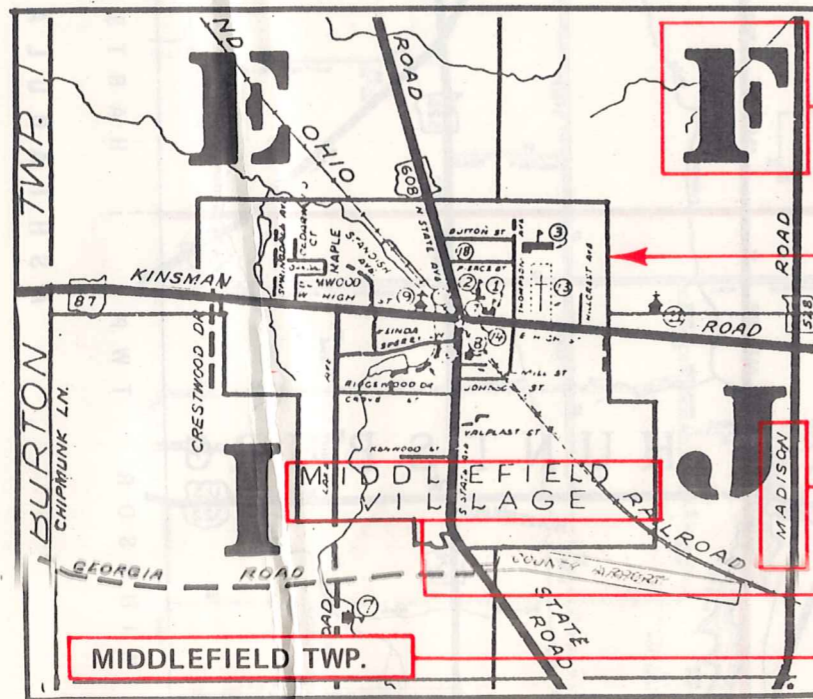
- Township Boundary
- Township Name
- Village Boundary
- Village Name
- Tract Lot Number
- Street Name
- Acreage
- Deed Book & Page
- Owners Name
- Denotes Continous Ownership

SAMPLE (PARTIAL) MAP PAGE



- Map Page Number
- Village Name
- Village Boundary
- Township Name

SAMPLE (PARTIAL) MUNICIPALITY INDEX MAP



- Street Name
- Village Name
- Township Name

## USE OF THE MAP VOLUME

1. LOCATE THE GENERAL AREA OF INTEREST ON THE COUNTY INDEX MAP, ATLAS PAGE 'B', AND NOTE THE MUNICIPALITY NAME (TOWNSHIP OR VILLAGE).
2. REFER TO THE TABLE OF CONTENTS, ATLAS PAGE 'C', AND NOTE THE BEGINNING ATLAS PAGE NUMBER FOR THE MUNICIPALITY OF INTEREST.
3. TURN TO THE PAGE INDICATED. ON THIS PAGE WILL APPEAR AN INDEX MAP FOR THAT MUNICIPALITY.
4. LOCATE THE GENERAL AREA OF INTEREST AND NOTE THE MAP PAGE NUMBER. THIS MAY BE EITHER A LETTER OR A NUMBER.
5. MAP PAGES ARE IN ALPHABETICAL (OR NUMERICAL) SEQUENCE FOLLOWING THE MUNICIPALITY INDEX MAP. FOLLOW SEQUENCE TO THE MAP PAGE INDICATED.
6. LOCATE SPECIFIC PARCEL OF INTEREST AND NOTE THE DESIRED INFORMATION.

NOTE: ON SOME MAPS YOU MAY BE REFERRED TO A DETAIL SHEET SHOWING AN ENLARGEMENT OF THE AREA. THESE MAPS ARE FOUND AT THE END OF THE REGULAR MAP PAGES IN EACH MUNICIPALITY IN EITHER ALPHABETICAL OR NUMERICAL SEQUENCE.

NOTE: CHARDON VILLAGE HAS TITLE SHEETS. TO LOCATE OWNERS NAME, NOTE THE PARCEL NUMBER, REFER TO THE TITLE PAGE FOLLOWING THE MAP OF INTEREST, FOLLOW NUMERICAL SEQUENCE TO THE PARCEL NUMBER OF INTEREST AND NOTE THE DESIRED INFORMATION. IN ALL OTHER MUNICIPALITIES THE OWNERS NAME APPEARS ON THE MAP PAGE.

This book is the property of REAL ESTATE DATA, INC. and is distributed by REDI under a leasing arrangement requiring return to REDI upon termination of the lease. REDI reserves the right to reclaim this book if found in the possession of any firm or person where possession was obtained through any unauthorized source.